

Auditor Software

Quick Reference Guide

This quick reference guide will enable you to install and use the Auditor Software, supplied on the CD ROM.

1. Installing the software

The software is designed to auto-install. Insert the CD into the CDROM drive of your computer and the on-screen instructions should appear. Please follow these to install the software. If the software does not automatically install, select and run the Setup.exe file from the CD.

2. Knowing your COM port number

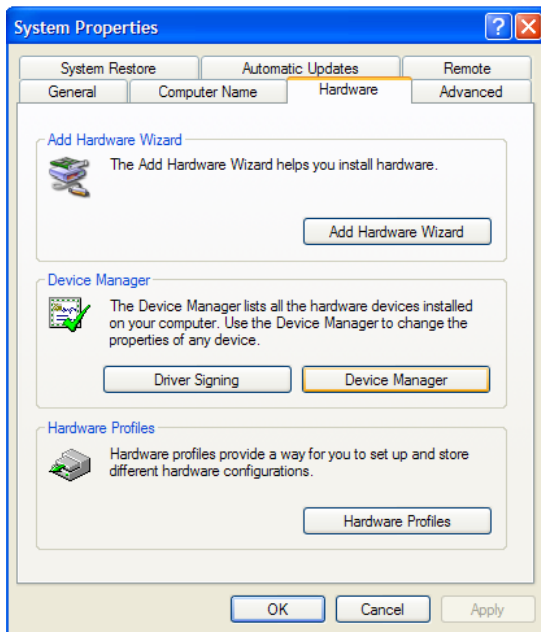


Fig 1

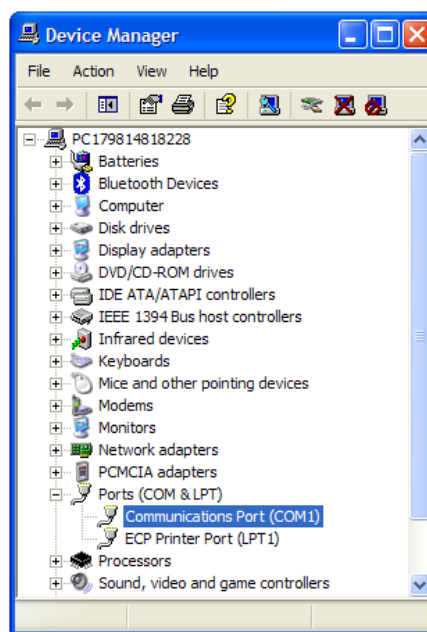


Fig 2

To find your COM port, start by selecting Start-Settings-Control Panel. Then select System to bring up the System Properties screen, See Fig 1 above. Now select Hardware then Device Manager.

From the list, see Fig 2 above right, select Ports (COM & LPT) to show the full list of COM ports.

At this time you will see the list of available COM ports on the PC.

Usually COM port 1 and 2 are available.

These are the small 9 way D shaped plugs on the back of the PC.

If you are using a USB to serial port adaptor make sure it is plugged in or else it will not show in the list. This may be COM port 5, 6 or 7.

Make a note of the COM port you are going to use for the Auditor software and continue to 3. Running the software for the 1st time.

3. Running the Software for the First Time

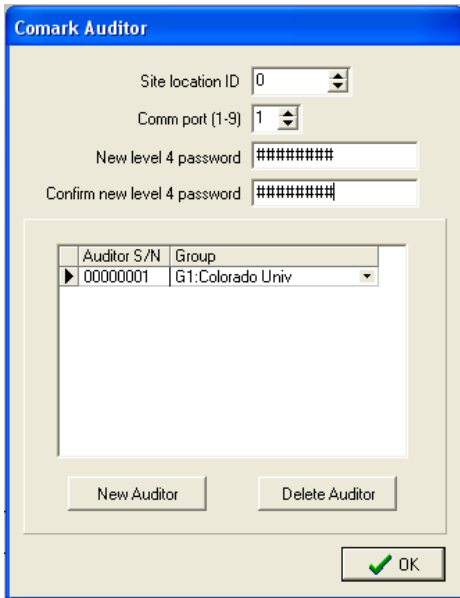


Fig 3

Double click on the Auditor Shortcut on the desktop.

The on-screen image will be as shown in Fig 3.

At this point enter the Site Location ID (Useful if you have data coming in to a central point from more than one location. Helps identify where data originated.)

Enter the COM port number for the PC.

Enter a level 4 password to get access to the software the next time and for all subsequent uses.

Use the New Auditor button to add Auditors to the software.

The software will ask for a language to be selected by choosing the appropriate flag. See below Fig 4:



Fig 4

If the language you select does not exist then select another or simply select English.

The software will open to this screen, Fig 5

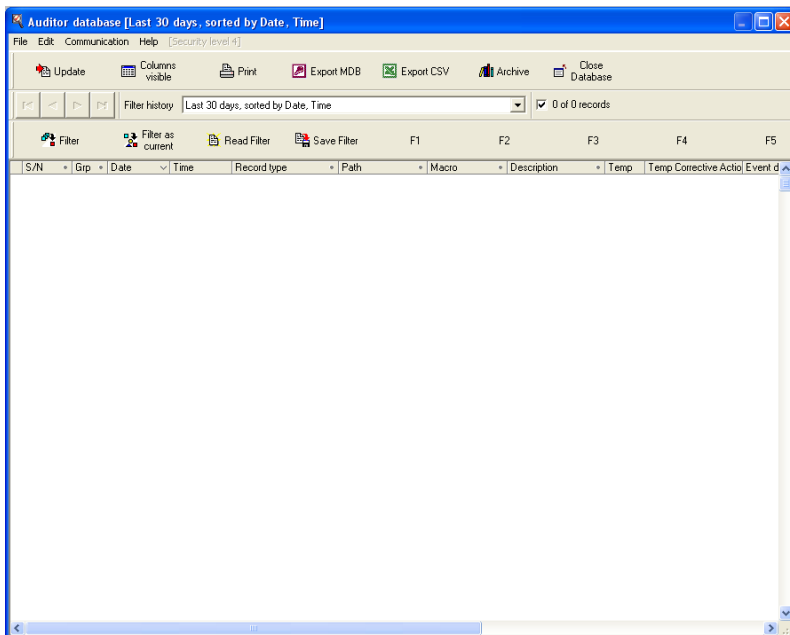


Fig. 5

Now installation of the software is complete.

All that remains is to write and load your Auditor program or import one that has been supplied separately.

Please refer to the supplied user guide, see help-user guide for more information or contact your Sales Engineer or Comark to discuss your options.